



Innovation for Dementia Care: Results of a recent workshop in Oklahoma City *

**APA NJ 2019, Session 48
January 25, 2019**

Jennifer Senick, Ph.D., Rutgers Center for Green Building,
Bloustein School of Planning and Public Policy, Rutgers University
Emily Roberts, Ph.D., M.A., M. Arch. Oklahoma State University

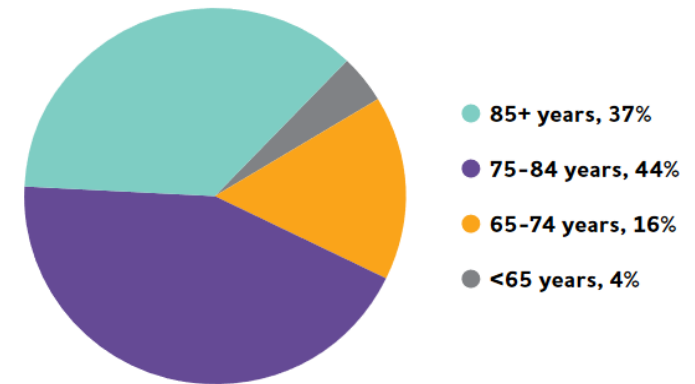
*Oklahoma State University and the American Society of Interior Design (ASID) Foundation

Demographics of Aging in the U.S.

- 1 in 3 Americans is 50+
- By 2030, 1/5 will be 65+
- 14% of people 71+ has dementia (ADAMS)
- 10% percent of people 65+ has Alzheimer's dementia, and incidence increases w/ age (Alzheimer's Assn, 2018)
- *In Oklahoma*, there are approximately 61,00 older adults with Alzheimer's, predicted to grow by 26.7% by the year 2025.

FIGURE 1

Ages of People with Alzheimer's Dementia in the United States, 2018



Created from data from Hebert et al.^{A3,30}

Percentages do not total 100 because of rounding.

Alienating Culture of Dementia Care



Shared bedrooms of
double-loaded corridors

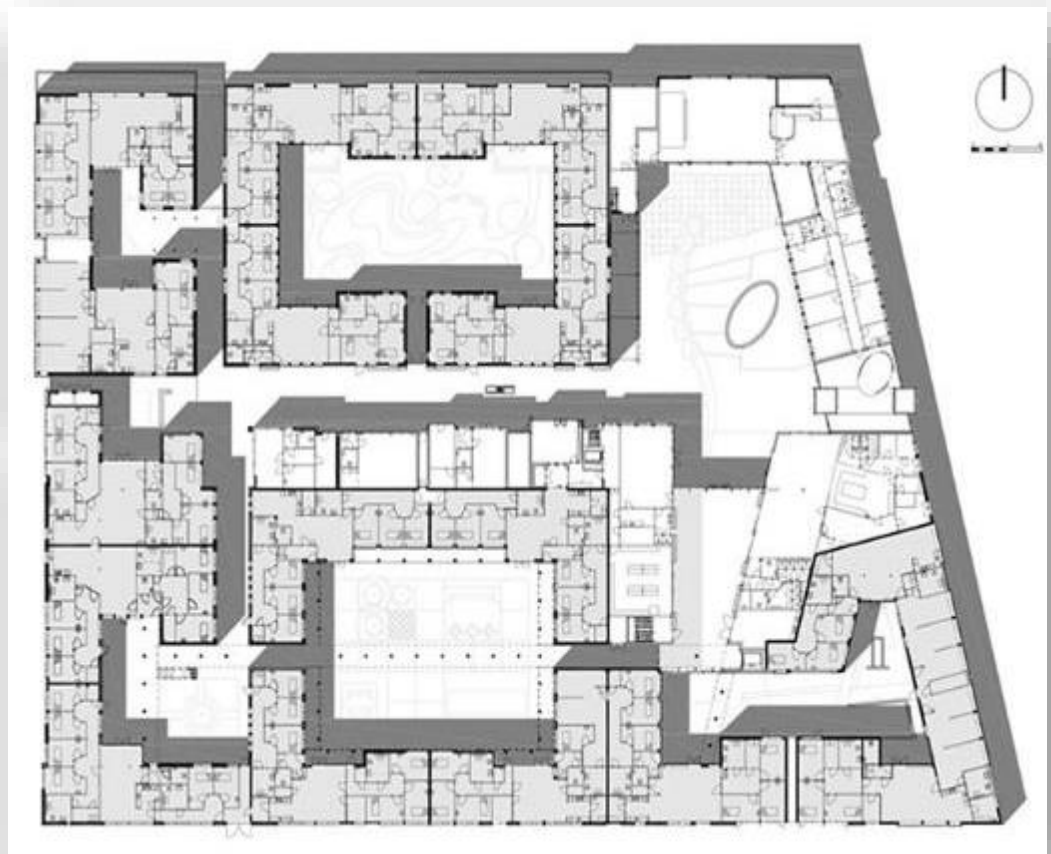


Activity station A



Activity station B

Forward-thinking Model of Dementia Care



Hogewey (Dementia Village)
Near Amsterdam, the Netherlands

Dementia Village



This village provides 8 life-style households options, as well as restaurants, cafes, gardens and a supermarket in a self contained community.

Dementia Village



Each of the courtyard gardens were designed by a different landscape architect to create multiple sensory experiences as residents wander and explore.

Dementia Village



Indoor/outdoor opportunities for engagement

A Dementia Village in Oklahoma?

- Adaptive reuse of existing buildings is one solution and thoughtfully developed will contribute to environmental sustainability.
- Unused and underused buildings represent a valuable resource with benefits which include strengthening existing communities.

Retrofitting Distressed Malls

Interior urban malls are being repurposed to exterior walking mall settings with indoor/outdoor opportunities for engagement. Forecasts are that 10% of the nation's 1,000 enclosed malls will fail by 2022, eventually converting to uses other than retail.



A rendering of a proposal for Belvedere Crossing, a mall in West Palm Beach, Florida. June Williamson with Anne Vaterlaus

Retrofitting Distressed Malls



A Sears store inside the Woodbridge Center Mall in Woodbridge, NJ.



After: Fitness centers, churches, medical clinics, and data centers

A stranded asset repurposed as town center



Rendered above: the redesigned atrium and surrounding grounds – creating a town center where none existed.

Credit: Somerset Development. The exterior of the 2M SF Bell Works in Holmdel, NJ.
Architect: Eero Saarinen, early 1960s

Convergence of Needs

NEED FOR
IMPROVED AND
EXPANDED
DEMENTIA
PROGRAMS AND
SERVICES

NEED FOR
SUSTAINABLE
BUILDING
PRACTICES
AND REGREENING
OUR CITIES DUE TO
GLOBAL CLIMATE
CHANGE

NEED FOR
REPURPOSING
DISTRESSED
MALLS
DUE TO CHANGES
IN CONSUMER
SPENDING

NEED FOR
INTERGENERATIONAL
MODELS FOR
HEALTH AND
WELLNESS



Dementia Friendly
CITY CENTER

Source: Convergence Workshop. November 9, 2018. Oklahoma City, OK.
Oklahoma State University and the American Society of Interior Design (ASID) Foundation.

Design Charrette with Case Study Site



This case study site is an 800,000 sq. ft. enclosed mall opened in 1974 and closed in 2017.

Conceptual Site Sketches



View of City Center



City Center Section

A mixed-use public /private partnership for residents with dementia, their families and the general community.



Yoga park

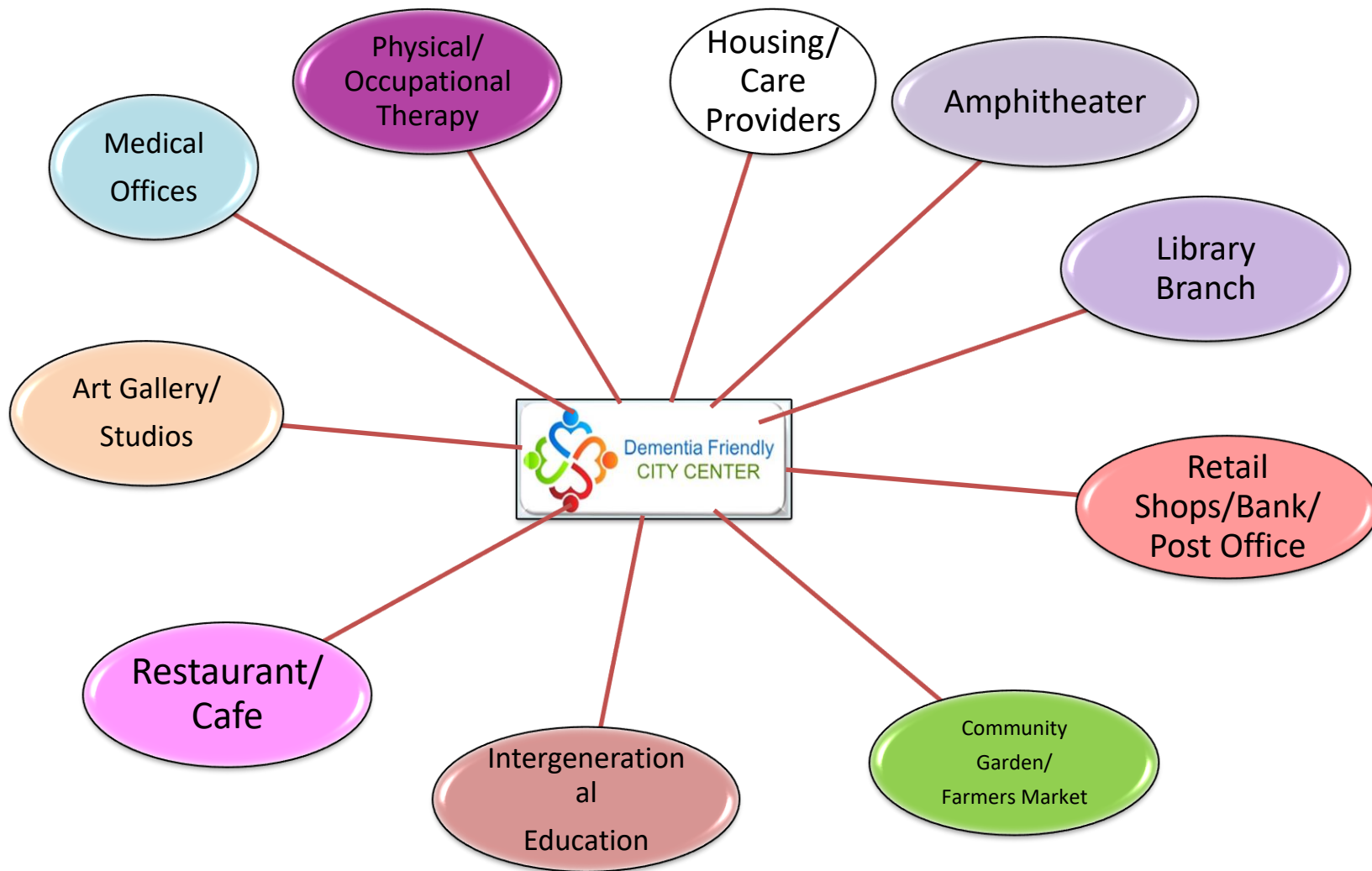


Community Garden

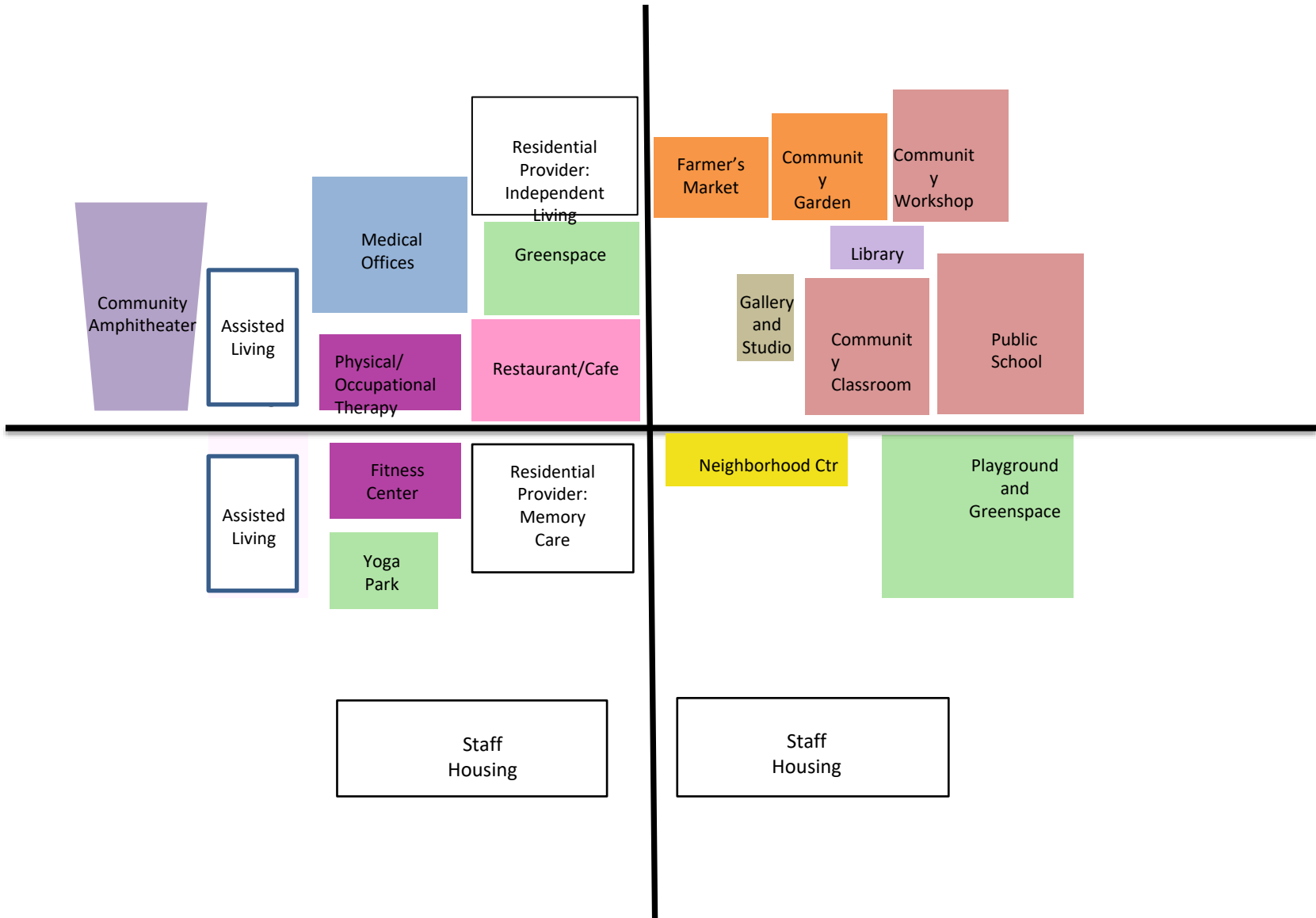
Community Partners Workshop (Nov. 9, 2018)



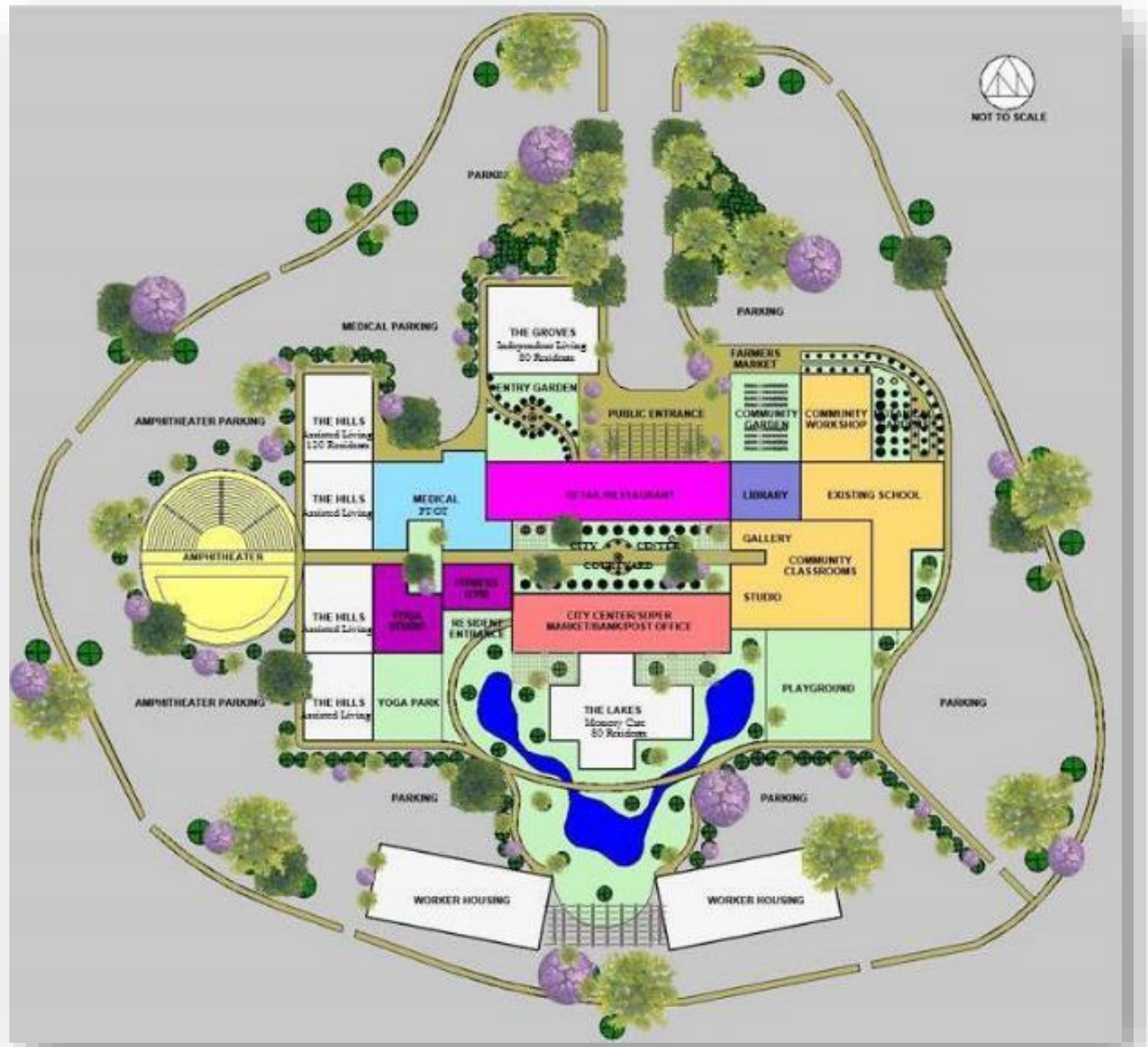
Site Components



Site Adjacencies



Conceptual Site Plan





City Center Farmers Market



City Center Dining and Cafe



Medical Center Courtyard



Intergenerational Classroom Building

Rural-to-Urban Options for Dementia Communities in New Jersey?

