

2018 Sustainable Raritan **River Conference**

Lightning Talk Presentation

Spatial Distribution of Contaminants in Lower Raritan River Sediments



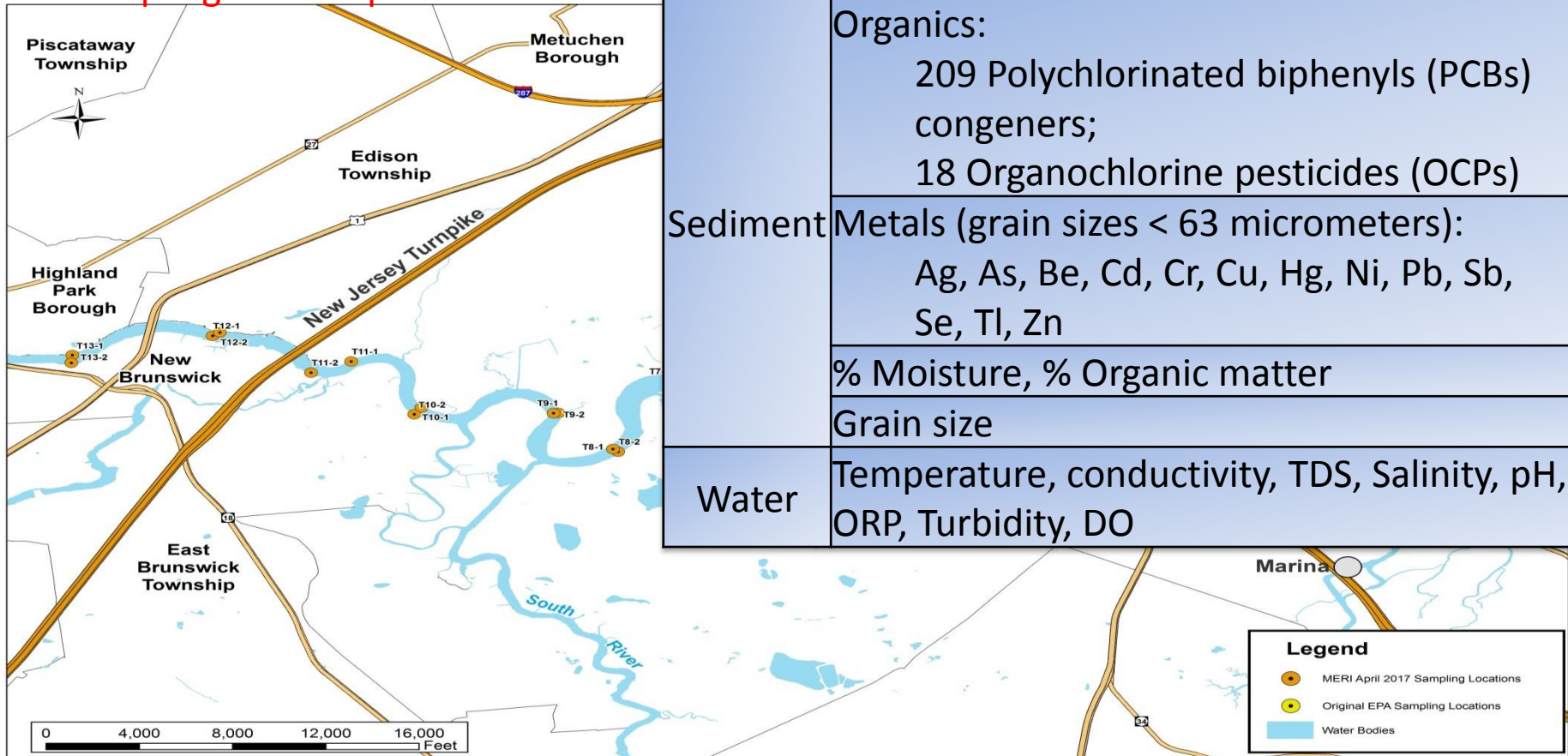
MERI | Meadowlands Environmental
Research Institute

Rutgers - DEES

RUTGERS
UNIVERSITY | NEWARK

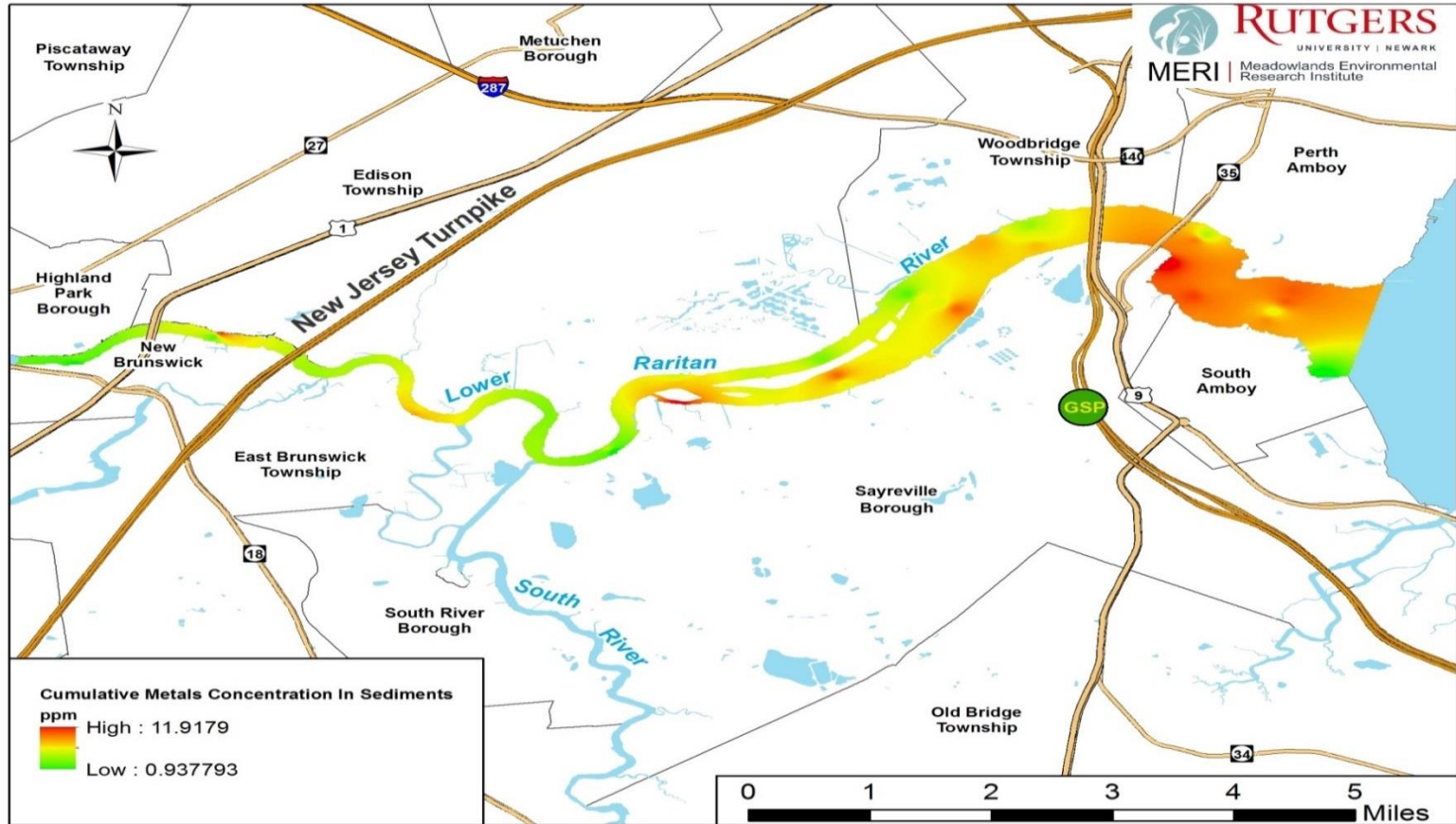
MERI 2017 Sampling Locations

Sampling Points April 2017

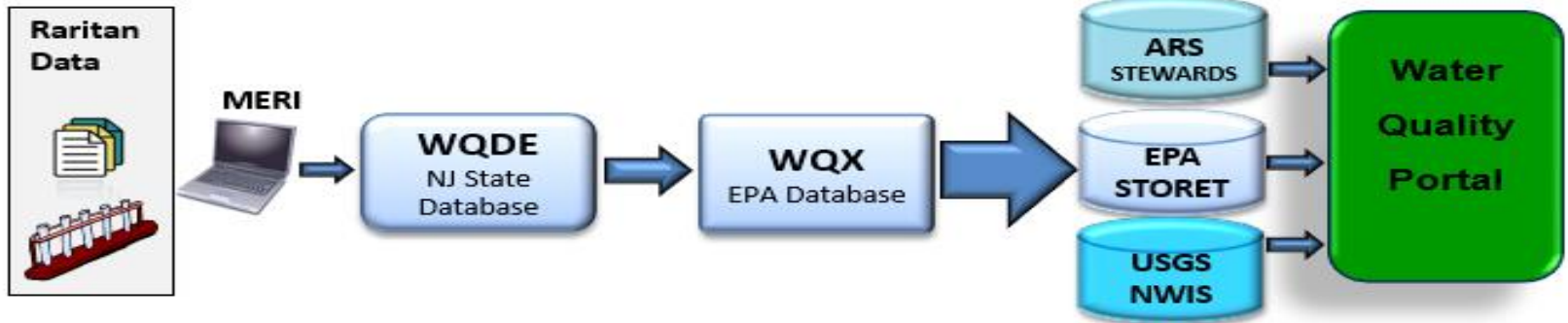


MERI Lower Raritan Sediment Acquisition

Cumulative Metals Calculation, Concentration In Sediments



Approved Data Migration to State and Federal Data Repositories



- Lower Raritan River sediment data has been approved for submission to WQDE (NJ State Database) and WQX (EPA)
- This data will be discoverable via web services from state and federal data repositories