

Initial Findings

- Some cross-county collaboration within watershed
- Challenges to collaboration:
 - *Political Willingness*
 - *Limits of Regulatory Authority*
 - *Access to Scientific and Technical Information*

(Middlesex County OEM, 2015; Tetra Tech, 2016a; Tetra Tech, 2016b.; URS, 2014; Tetra Tech, 2015; Somerset County MPC, 2018; Union County Office of Emergency Management, 2016)

Regional Flood Mitigation by WMA

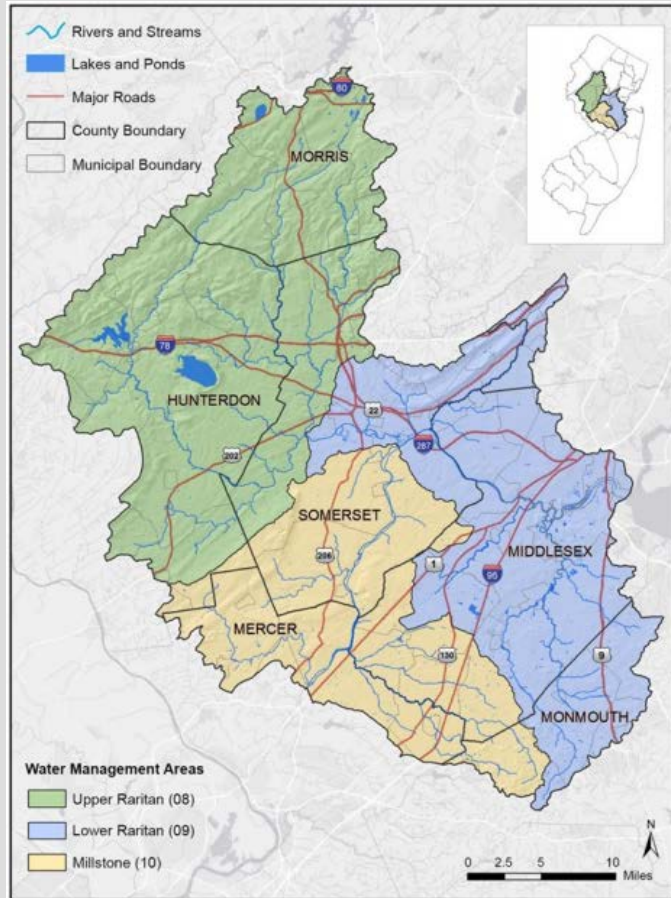


Figure 2. Raritan River Watershed by WMA
(Giri, Krasnuk, Lathrop, Malone, and Herb, 2016)

1. Create a forum for cross-jurisdictional communication and coordination
2. Allow participating jurisdictions access to FEMA flood mitigation funding
3. Integrate scientific and technical analysis from the State of the Raritan River reports
4. Allow for the integration of WMA-based nonprofits as stakeholders in the process
5. Match the geographic scales of flood control and water quality control

(FEMA, 2011; Malone, Lathrop, Pyshnik, Blum, Whytlaw & Bognar, 2018; Weber, Muste, Bradley, Amado, Demir, Drake, ...and Thomas, 2018; Rutgers, n.d.; Malone, 2015a, Malone, 2015b, Malone, 2015c).